

SPARE PARTS SECTION

Manual Sheet Metal Curving Rolls

Model. SRG-12

Order Code S267

Edition No : SRG-12-1

Date of Issue : 05/2021

The following section covers the spare parts diagrams and lists that were current at the time this manual was originally printed. Due to continuous improvements of the machine, changes may be made at any time without notification.

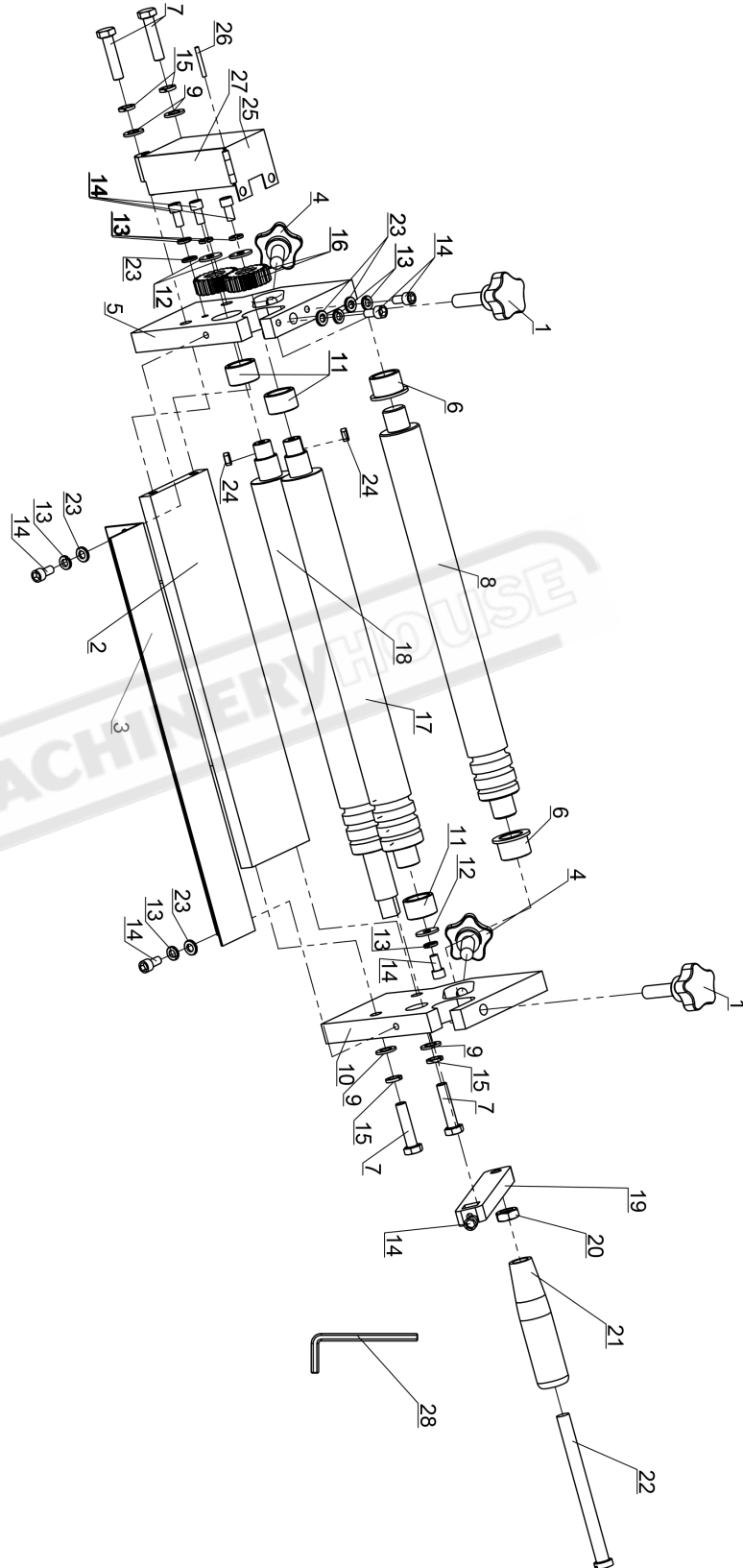
HOW TO ORDER SPARE PARTS

1. Have your machines **model number, serial number & date of manufacture** on hand, these can be found on the specification plate mounted on the machine
2. A scanned copy of your parts list/diagram with required spare part/s identified
3. Go to www.machineryhouse.com.au/contactus and fill out the enquiry form attaching a copy of scanned parts list.

CONTENTS

Spare Parts Diagram.....	10
Sparts Parts List	11

SPARE PARTS DIAGRAM



SPARE PARTS LIST

ITEM	DESCRIPTION	QTY.	ITEM	DESCRIPTION	QTY.
1	ADJUSTMENT KNOB	2	15	SPRING WASHER 8MM	4
2	BASE	1	16	GEAR	2
3	GUIDE PLATE	1	17	UPPER SHAFT	1
4	ADJUSTMENT KNOB	2	18	LOWER SHAFT	1
5	LEFT STAND	1	19	HANDLE	1
6	BUSHING	2	20	NUT M10	1
7	BOLT M8X35	4	21	HANDLE GRIP	1
8	IDLE SHAFT	1	22	SCREW M10X120	1
9	WASHER 8MM	4	23	WASHER 6MM	5
10	RIGHT STAND	1	24	KEY	2
11	BUSHING	3	25	GEAR COVER	1
12	WASHER 6MM	3	26	PIN	1
13	SPRING WASHER 6MM	8	27	COVER	1
14	SCREW M6X12	9	28	HEX KEY WRENCH 5MM	1

NOTE: SOME INDIVIDUAL PARTS MAY ONLY BE AVAILABLE AS AN ASSEMBLY